



ROSENBERG AUSTRALIA



Rosenberg Australia Pty. Ltd.

87-89 Woodlands Drive
Braeside VIC 3195

Phone: +61 3 9587 8233
Fax: +61 3 9587 8244

www.rosenbergaustralia.com.au
info@rosenbergaustralia.com.au



The Rosenberg Group

Since the company's foundation in 1981, Rosenberg Ventilatoren GmbH has developed into an important center in the heating, ventilation and air conditioning industry in Europe through the development and manufacturing of speed-controllable external rotor motors, fans, blowers, air handling units, and motor speed control devices. Our aim is for high quality production backed by top class service for our clients. With major production faci-

lities located in Glaubitz (D), Waldmünchen (D), Hungary, Czech Republic, Italy, France, Slovakia and China, Rosenberg has its sales offices in more than 45 countries. Using advanced modern equipment, computer controlled production, self-responsible working teams and independently certified test chambers, today we are serving the major industries like HVAC, Wind Power, Railways, Aviation and Navy.



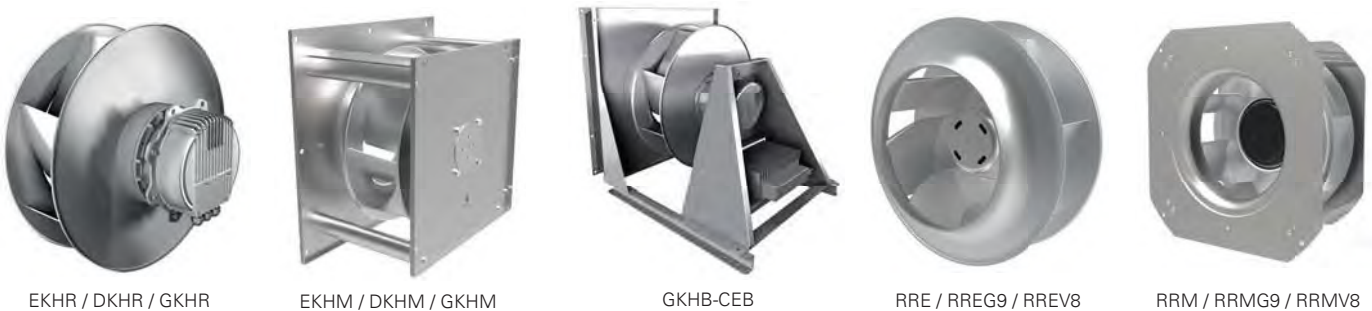
Rosenberg Australia

Rosenberg Ventilatoren GmbH started its operation in Australia in the year 2003 under the name of Rosenberg Australia Pty Ltd. Since then, Rosenberg Australia is serving the local HVAC Industry by supplying state of the art German engineered products.

In an effort to meet customer demands and expectations, we supply smaller fans from our subsidiary Ecofit, France and air curtains from Airtecnicos, Spain. Ecofit and Airtecnicos are pioneers in their field and maintain very high quality stan-

dards, manufacturing world class products. These strong connections enable us to offer the industry a wider range of products from a single source. With such a wide range of products, we come up with the most suitable solutions for our customers' needs to meet the increasing demand for high quality products.

Make Rosenberg Australia your first choice for new developments, retrofits, replacements or upgrades and feel the difference!



Plug Fans:

Impellers available in aluminium (Ø250-Ø710)
 Impellers available in high quality GFR-PP material (Ø315-Ø560)
 Maximum volume capacity: up to 25,000 m³/h

Maximum pressure capacity: up to 1800 Pa
 High efficiency impellers with low sound characteristics

Rosenberg Range:

EKHR / DKHR

- Impellers with 1 or 3 phase AC motors

EKHM / DKHM

- Impellers with 1 or 3 phase AC motor module

GKHR

- Impellers with 1 or 3 phase EC motor.

GKHM

- Impellers with 1 or 3 phase EC motor module

GKHB-CEB

- Plug fans with 3 phase EC motor and external electronic

Ecofit Range

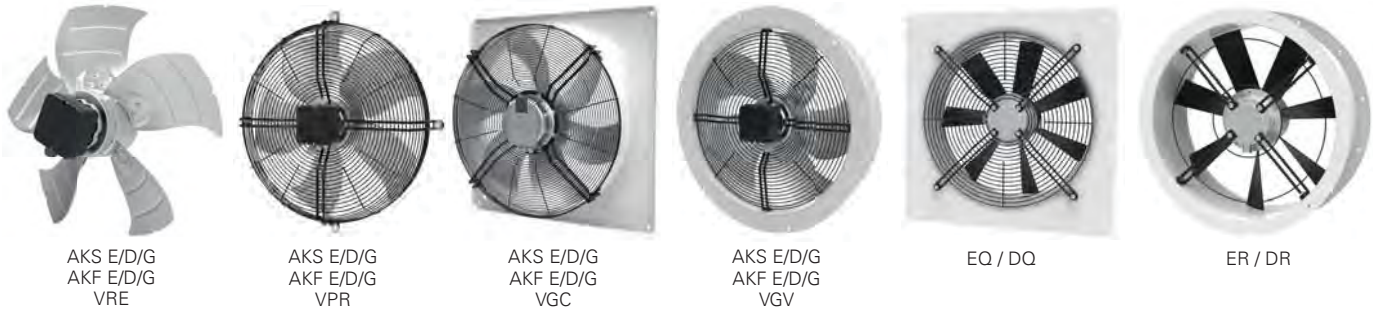
RRE / RREG9 / RREV8

- Impellers with 1 phase AC or EC motor (Ø190-Ø315)

RRM / RRMG9 / RRMV8

- Impellers with 1 phase EC motor module





Axial Fans

Impellers available in steel/aluminium/plastic (Ø170-Ø1000)
Maximum air volume: up to 33,000 m³/h

Maximum pressure: up to 380 Pa
High efficiency impellers with low noise characteristics.

Rosenberg range:

AKFE / AKFD

- Impellers with die cast aluminium blades and 1 or 3 phase AC motor

AKFG

- Impellers with die cast aluminium blades and 1 or 3 phase EC motor

AKSE / AKSD

- Impellers with die pressed aluminium blades and 1 or 3 phase AC motor

AKSG

- Impellers with die pressed aluminium blades and 1 or 3 phase EC motor

EQ / DQ

- High efficiency aerodynamically profiled blades with 1 or 3 phase AC motor and square mounting plate

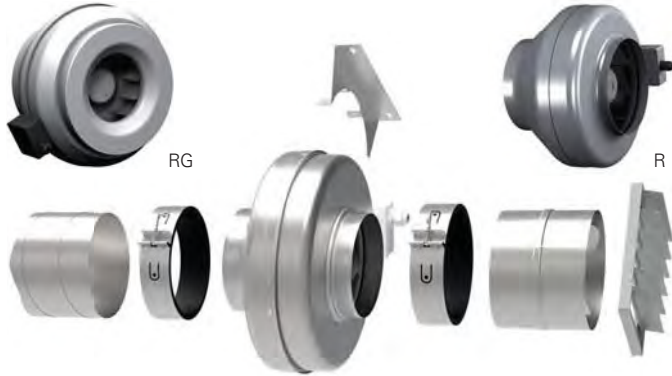
ER / DR

- High efficiency aerodynamically profiled blades with 1 or 3 phase AC motor and double flanged ring

Ecofit range:

VGX / VPR / VGC / VRE

- Impellers with die pressed mild steel or plastic blades and 1 or 3 phase AC motor.



Rosenberg Inline Centrifugal fan

- Casing made of galvanized sheet metal
- Easy installation in any position
- Single phase motor with Class F insulation for protection

- Available for 150 to 315 mm diameter duct connections
- 100% speed controllable using auto transformers or electronic control

R / RG

- Circular Inline Centrifugal fan with 1 phase AC/ EC motor



Controllers

We have world class speed controllers for both our EC and AC fan ranges. Contact us for further details.

Product range



Centrifugal fans with single or double inlet

Both forward and backward curved options available:

- Maximum volume capacity: up to 65,000 m³/h
- Maximum pressure capacity: up to 2000 Pa
- 100% speed controllable



Rosenberg Range:

Backward curved impellers only - Wheel only with Taperlock hub disc and inlet ring (Ø250-Ø1000)

DKNB, plug fans with IEC standard motor (Ø250-Ø1000)

DHA E/D, DRA E/D

DWDI backward/forward curved fans with 1 or 3 phase AC motor

EHA E/D, ERA E/D

SWSI backward/forward curved fans with 1 or 3 phase AC motor

Ecofit Range

GRE / GREG9, SWSI forward curved fans with 1phase AC or EC motor (Ø108 - Ø200)

GDS / GDSG9 / GDSV8, DWDI forward curved fans with 1 phase AC or EC motor (Ø120 - Ø180)



Air Curtains

Airtècnics is a pioneer in the design and development of state of the art air curtains. With more than 25 years experience, we are a market leader, exporting to more than 55 countries worldwide.

We design and manufacture a complete range of air curtains for all kinds of applications and installations, including in-built high energy efficient EC fans, DX-Coils when heat pumps are used and multiple jet outlets. We offer also tailor made designs and exclusive customized finishes

- Painted to any RAL colour or metal finish
- Different panel materials: aluminium, stainless steel AISI 304 (brushed or polished), wood, glass, PVC/PES, etc.



Examples of customized panels, meeting client specifications

Please consider lead time for any of our customized air curtain options, as these are manufactured to order only!



ECFanGrid with GKHM fans

ECFanGrid

Our multiple fan systems deliver uniform air distribution. This increases the efficiency of downstream components like coils and filters. Using a multiple fan system vs a single blower results in reduced low frequency sound levels which allow for smaller attenuators. A Rosenberg ECFanGrid is ideally suited

for use in retrofit projects, particularly where a single large radial fan is being replaced. The compact and modular design of our ECFanGrid allows our modules to fit through standard doors. They can be easily handled by two people.

Benefits of using a Rosenberg ECFanGrid:

When redundancy is a requirement, one approach is to place a second identical system beside the operating unit. This is outdated and inefficient and doubles the cost as well as the required footprint. However, if an ECFanGrid is used and one of the fans stops, the remaining fans automatically increase their speed to maintain the operating point until the fan can be replaced. This makes the Rosenberg ECFanGrid a logical, efficient and cost-effective choice.

- Plug & Play System
- Built-In Redundancy
- Compact & Flexible Design
- Ideally suited for Retrofit Applications
- Ease of Maintenance and Replacement
- High Air Flows
- Uniform Air Flow to Downstream Components
- Less Low Frequency Noises (Shorter attenuators)
- Easy implementation of Air Flow-, Pressure or Temperature controls



www.ECFanGrid.com



Download the Info flyer **ECFanGrid** here:
<http://www.rosenbergaustralia.com.au/downloads>

More information and further details on:
<https://www.rosenberg-gmbh.com/en/product-range/air-handling-units/ecfangrid-en>

Download **RoVent10**:
<https://rosenberg-gmbh.com/en/infocenter/downloads/software>

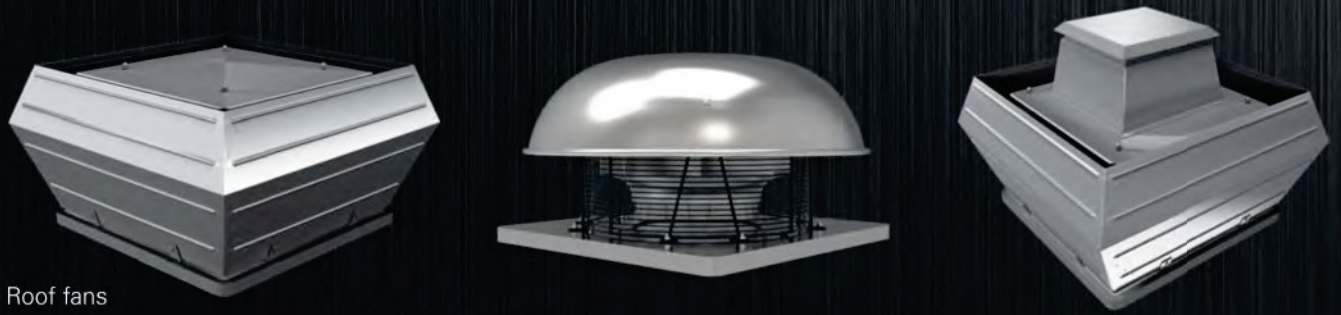


Our international product range consists of but is not limited to:

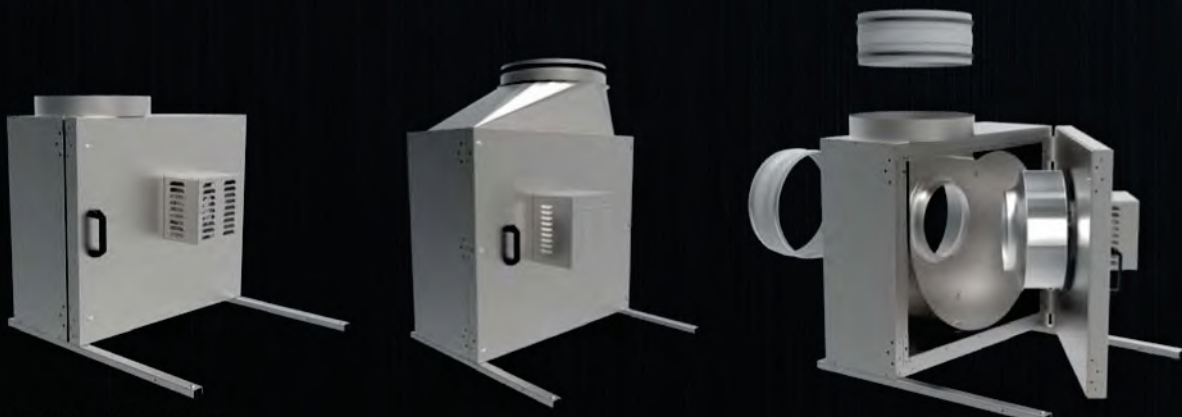


SupraBox DELUXE

SupraBox COMFORT



Roof fans



Kitchen exhaust fans



Unobox

Unobox-ME



Your Sales Representative

Rosenberg Australia Pty. Ltd.

**87-89 Woodlands Drive
Braeside VIC 3195**

Phone: +61 3 9587 8233

Fax: +61 3 9587 8244

**www.rosenbergaustralia.com.au
info@rosenbergaustralia.com.au**