

ETRI®

AERONAUTICS FANS



Founded in 1945, ETRI activity has been taken over in 2002 by ECOFIT who designs, manufactures and sells electric motors and fans.



Specific fans are available and can be made to suit customers needs.

Our application engineers work constantly with our customers specification to offer the best fan selection.

In this way, many special units are produced both for commercial and military aeronautics applications. Some of our fans are NATO codified.



CONTENTS :

DC AXIAL FANS.....	p.3
400Hz FANS.....	p.4
High Performance DC Fans	p.7

Cooling of printed circuits, semi-conductors, motors...

Airflow up to 142,7l/s

Pressure up to 32mmH₂O

Dimensions from 25 x 25 x 10mm to Ø 172 x 50mm

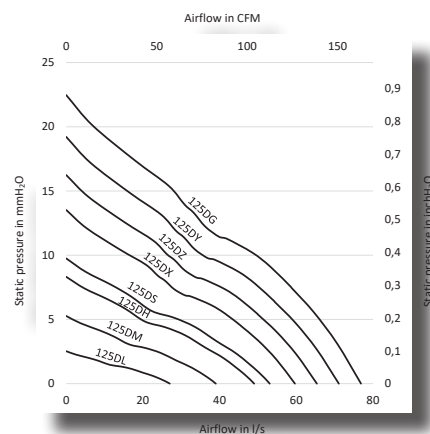
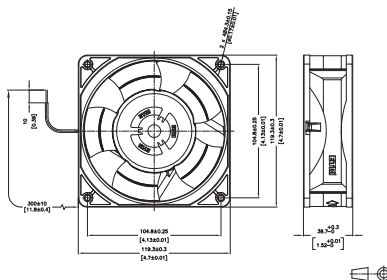
Motors DC in 5V, 12V, 24V and 48V

Options: speed sensor, alarm, different IP levels, connection type,...

We introduce below our new fan with blades in sabre shape and "winglets" in the middle to offer a higher airflow (up to 77l/s) without increasing noise level.

125D A

120x120x38mm



Weight: 0,33 Kg / 0,73 Lb

Housing in plastic UL 94 V-0

Impeller in plastic UL 94 V-0

L-10 life expectancy at 40°C: 80.000 hours

Operating temperature range: -20 / +70°C

Storage temperature range: -50 / + 70°C

Connection: leads

Brushless DC motor

Part Number	Voltage	Voltage range	Airflow		Pressure		Nominal speed	Noise level LP	Nominal current	power
	V		l/s	CFM	mm H. o	inch H. o	RPM	dBA	mA	W
125DL1LP11000 2 4	12	6V-15V	27,0	57,24	2,52	0,10	1695	30	Pending	Pending
	24	14V-28V	27,0	57,24	2,52	0,10	1695	30	37,5	0,9
	48	22V-56V	27,0	57,24	2,52	0,10	1695	30	Pending	Pending
125DM1LP11000 2 4	12	6V-15V	39,0	82,68	5,27	0,21	2445	38	Pending	Pending
	24	14V-28V	39,0	82,68	5,27	0,21	2445	38	112,92	2,71
	48	22V-56V	39,0	82,68	5,27	0,21	2445	38	Pending	Pending
125DH1LP11000 2 4	12	6V-15V	49,0	103,88	8,32	0,33	3075	43	Pending	Pending
	24	14V-28V	49,0	103,88	8,32	0,33	3075	43	223,75	5,37
	48	22V-56V	49,0	103,88	8,32	0,33	3075	43	Pending	Pending
125DS1LP11000 2 4	12	6V-15V	53,0	112,36	9,75	0,38	3325	46,2	Pending	Pending
	24	14V-28V	53,0	112,36	9,75	0,38	3325	46,2	280	6,8
	48	22V-56V	53,0	112,36	9,75	0,38	3325	46,2	Pending	Pending
125DX1LP11000 2 4	12	6V-15V	59,6	126,35	13,52	0,53	3740	48,8	Pending	Pending
	24	14V-28V	59,6	126,35	13,52	0,53	3740	48,8	402,92	9,67
	48	22V-56V	59,6	126,35	13,52	0,53	3740	48,8	Pending	Pending
125DZ1LP11000 2 4	12	6V-15V	69,4	147,02	16,24	0,64	4355	52,1	Pending	Pending
	24	14V-28V	69,4	147,02	16,24	0,64	4355	52,1	437,92	10,51
	48	22V-56V	69,4	147,02	16,24	0,64	4355	52,1	Pending	Pending
125DY1LP11000 2 4	12	6V-15V	71,1	150,67	19,21	0,76	4470	52,6	Pending	Pending
	24	14V-28V	71,1	150,67	19,21	0,76	4470	52,6	470,83	11,3
	48	22V-56V	71,1	150,67	19,21	0,76	4470	52,6	Pending	Pending
125DG1LP11000 2 4	12	6V-15V	76,9	162,94	22,46	0,88	4835	54,3	Pending	Pending
	24	14V-28V	76,9	162,94	22,46	0,88	4835	54,3	590	14,3
	48	22V-56V	76,9	162,94	22,46	0,88	4835	54,3	Pending	Pending

For use in severe environment (tropicalized, salt spray, with high vibrations or shocks,...)

Airflow up to 970l/s

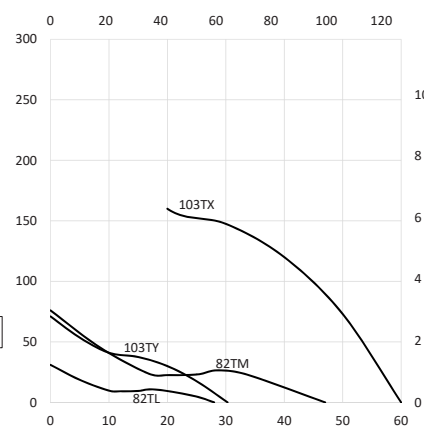
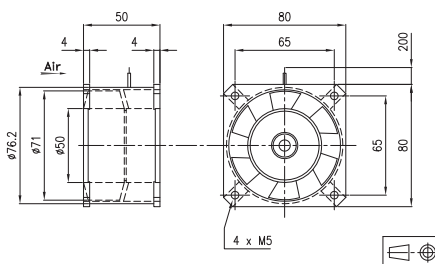
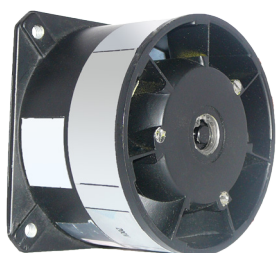
Pressure up to 440mmH₂O

Dimensions from 67 x 38mm to 275 x 275 x 214mm

115V, 200V or other voltages

Not RoHS compliant except on demand.

103T
80x80x50mm



Weight: 0,17 Kg / 0,38 Lb

Housing in aluminium

Impeller in metal

L-10 life expectancy at 40°C: 25.000 hours

Operating temperature range: -10 / +70°C

Storage temperature range: -54 / + 85°C

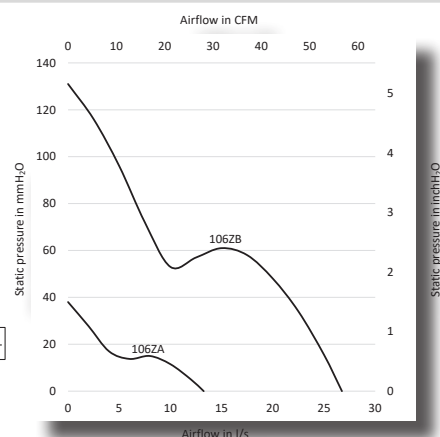
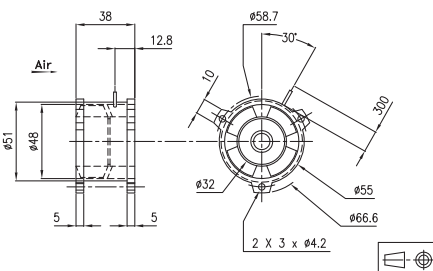
Connection: leads

GAM T1 listed

Part Number	Voltage		Frequency	Nb Phases	Airflow		Pressure		Nominal speed	Noise level LP	Nominal current	Starting current	power	Capacitor
	V	Hz			l/s	CFM	mm H ₂ O	inch H ₂ O			A	A	W	µF
82TL0562C13 NR	115	400	3		29,0	61,48	32,3	1,27	7200	59	0,225	0,475	25	
	115	400	1		28,0	59,36	31	1,22	7050	59	0,245	0,37	24	0,69
82TL0560C13 NR	200	400	3		29,0	61,48	32,3	1,27	7200	59	0,13	0,275	25	
	200	400	1		28,0	59,36	31	1,22	7050	59	0,14	0,21	24	0,22
103TY0562C13 NR	115	400	3		30,0	63,60	72	2,83	11400	65	0,16	0,46	19	
	115	400	1		30,0	63,60	72	2,83	11400	65	0,18	0,39	21	0,69
103TY0560C13 NR	200	400	3		30,0	63,60	72	2,83	11400	65	0,095	0,27	19	
	200	400	1		30,0	63,60	72	2,83	11400	65	0,105	0,23	21	0,22
82TM0562C13 NR	115	400	3		47,0	99,64	76	2,99	11200	68	0,5	1,4	67	
	115	400	1		47,0	99,64	76	2,99	11200	68	0,63	1,1	72	2,2
82TM0560C13 NR	200	400	3		47,0	99,64	76	2,99	11200	68	0,29	0,76	67	
	200	400	1		47,0	99,64	76	2,99	11200	68	0,36	0,63	72	0,69
103TX0562C13 NR	115	400	3		60,0	127,20	280	11,02	23000	80	0,69	3,3	110	
	115	400	1		60,0	127,20	280	11,02	23000	80	1,05	2,8	120	3,2
103TX0560C13 NR	200	400	3		60,0	127,20	280	11,02	23000	80	0,4	1,9	110	
	200	400	1		60,0	127,20	280	11,02	23000	80	0,58	1,6	120	1

106Z

66,6x38 mm



Weight: 0,17 Kg / 0,38 Lb

Housing in aluminium

Impeller in metal

L-10 life expectancy at 40°C: 25.000 hours

Operating temperature range: -10 / +70°C

Storage temperature range: -54 / + 85°C

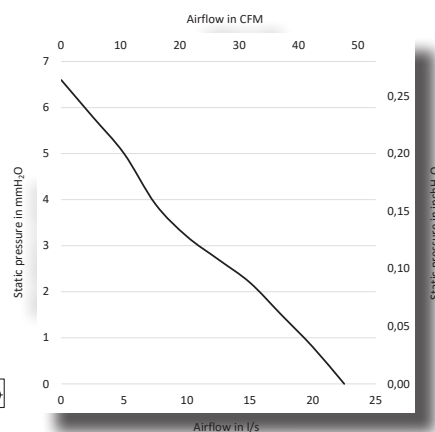
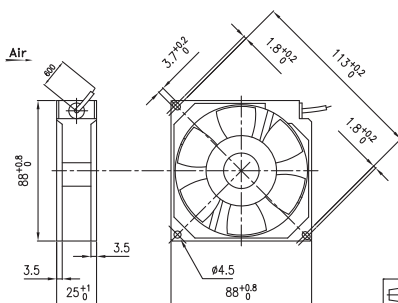
Connection: leads

GAM T1 listed

Part Number	Voltage	Frequency	Nb Phases	Airflow		Pressure		Nominal speed	Noise level LP	Nominal current	Starting current	power	Capacitor
	V	Hz		l/s	CFM	mm H. o	inch H. o	RPM	dBA	A	A	W	μF
106ZA0562C13 NR	115	400	3	13,0	27,56	38	1,50	11500	51	0,16	0,35	15	
	115	400	1	13,0	27,56	38	1,50	11500	51	0,18	0,35	15	0,47
106ZA0560C13 NR	200	400	3	13,0	27,56	38	1,50	11500	51	0,10	0,21	15	
	200	400	1	13,0	27,56	38	1,50	11500	51	0,11	0,21	15	0,147
106ZB0562C13 NR	115	400	3	27,0	57,24	131	5,16	22700	72	0,33	1,25	51	
106ZB0560C13 NR	200	400	3	27,0	57,24	131	5,16	22700	72	0,20	0,72	42	
	200	400	1	27,0	57,24	131	5,16	22500	72	0,22	0,46	43	0,32
106ZB0460C13 NR	200	400	3	27,0	57,24	131	5,16	22700	72	0,20	0,72	42	
106ZB0362C17 NR	115	400	3	27,0	57,24	131	5,16	22700	72	0,33	1,25	51	

110VU

88x88x25mm



Weight: 0,17 Kg / 0,38 Lb

Housing in aluminium

Impeller in metal

L-10 life expectancy at 40°C: 25.000 hours

Operating temperature range: -10 / +70°C

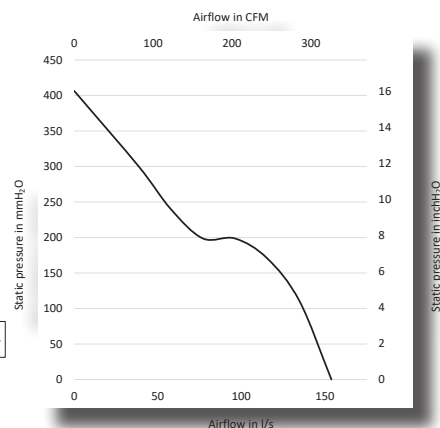
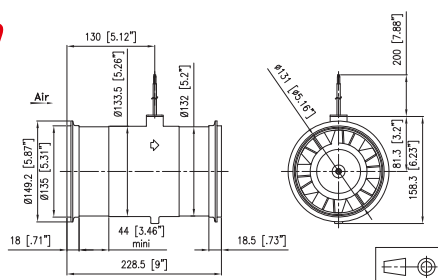
Storage temperature range: -54 / + 85°C

Connection: leads

GAM T1 listed

Part Number	Voltage	Frequency	Nb Phases	Airflow		Pressure		Nominal speed	Noise level LP	Nominal current	Starting current	power	Capacitor
	V	Hz		l/s	CFM	mm H. o	inch H. o	RPM	dBA	A	A	W	μF
110VU0162001 NR	115	400	1	22,5	47,70	6,6	0,26	3300	43	0,13	0,14	14	0,47
110VU0160001 NR	200	400	1	22,5	47,70	6,6	0,26	3300	43	0,075	0,08	14	0,15

155BW 149,2x228,5mm



Weight: 0,17 Kg / 0,38 Lb

Housing in aluminium

Impeller in metal

L-10 life expectancy at 40°C: 25.000 hours

Operating temperature range: -10 / +70°C

Storage temperature range: -54 / + 85°C

Connection: leads

GAM T1 listed

Part Number	Voltage		Frequency	Nb Phases	Airflow		Pressure		Nominal speed	Noise level LP	Nominal current	Starting current	power	Capacitor
	V	Hz			l/s	CFM	mm H. o	inch H. o			A	A	W	µF
155BW1160C13 NR	200	400	3		160,0	339,20	440	17,32	11600	84	1,6	10	350	

Options available on demand :

Speed sensor

Other IP levels

Special protection against salt spray

Special protection against shocks and vibration

Marine application

Wide temperature range

Other voltages

Our fans can comply with DO-160 norm, MIL norms, ...

ETRI® High Performance DC Fans

For use in severe environment (tropicalized, salt spray, with high vibrations or shocks,...)

For high pressures, two-stages fans available

Airflow up to 900l/s

Pressure up to 144mmH₂O

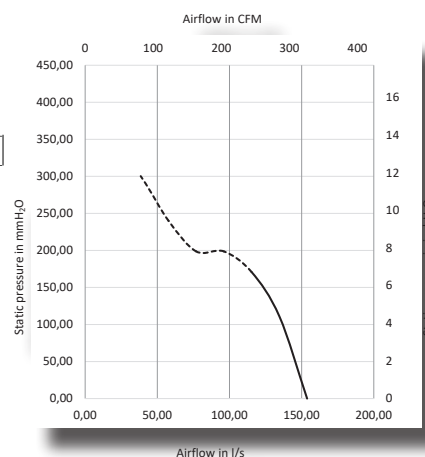
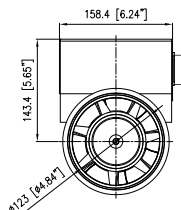
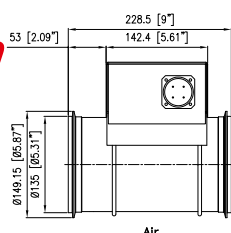
Dimensions from 107 x 80 x 60mm to 350 x 271mm

Single or three phases

AC motors in 115V, 230V and 400V

DC motors

155DBW
149,2x228,5mm



Weight: 3,6 Kg / 7,96 Lb

Housing in aluminium

Impeller in metal

L-10 life expectancy at 40°C: 25.000 hours

Operating temperature range: -35 / +55°C

Storage temperature range: -40 / + 75°C

Part Number	Voltage V	Voltage range	Airflow		Pressure		Nominal speed	Noise level LP	Nominal current	power
			l/s	CFM	mm H ₂ O	inch H ₂ O	RPM	dBA	A	W
155DBW	28	25,2V-30,8V	154,0	326,48	405,85	15,97	11100	83	11,6	325

Options available on demand:

Alarm

Speed control 0-10V

Galvanically isolated logic input and output

ETRI®

ECOFIT & ETRI PRODUCTS

BP 60008 - ZI SUD - RUE MARC SEGUIN
F-41101 VENDÔME CEDEX
FRANCE

Tel.: +33 (0)2 54 23 14 54

Fax.: +33(0)2 54 72 22 73

email: info@etrinet.com

www.etrinet.com

www.ecofit.com



ECOFIT & ETRI® PRODUCTS



THE AIR MOVEMENT GROUP