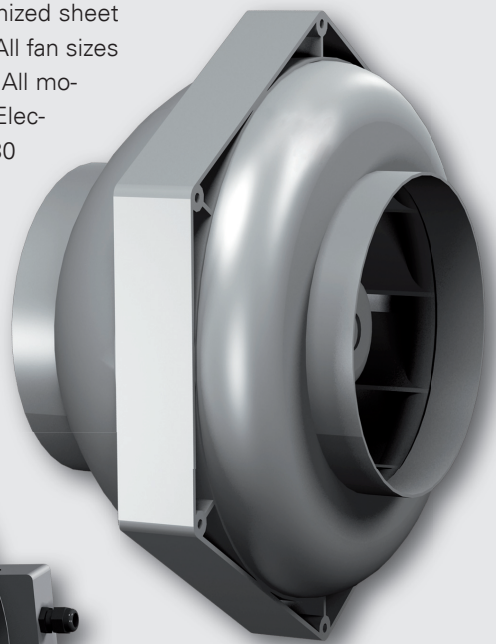




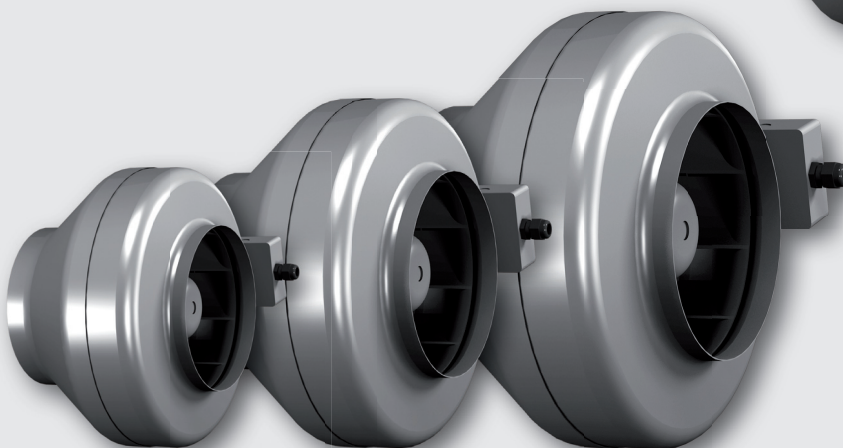
Quality or bargain? Rosenberg offers both!

Description

The Rosenberg In-Line Centrifugal fans are available with either a galvanized sheet metal casing or an attractive, impact- & flame-resistant plastic housing. All fan sizes are powered by external rotor motors & integral centrifugal fan wheels. All models have a motor protection class IP44 with matching terminal box. Electrical motor design is in accordance with the European Norm VDE 0530 having insulation class F with additional moisture protection and thermal contacts, which are wired in series with the motor windings for effective protection. The impellers are of plastic material for all sizes up to 315, and of galvanized sheet metal for size 315L. For full technical & performance details please contact our sales office.

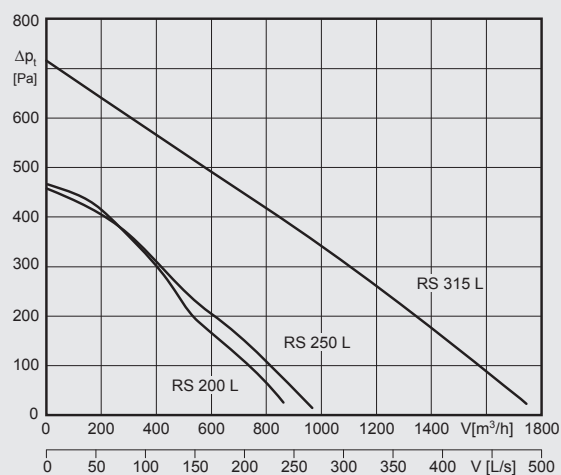
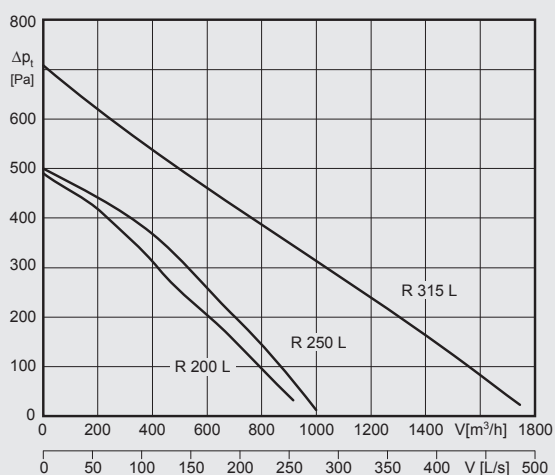
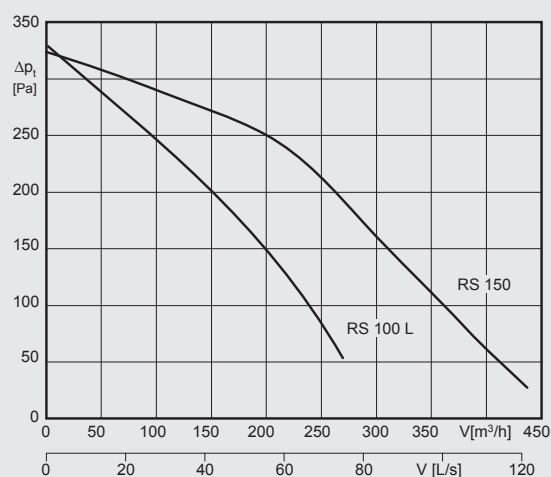
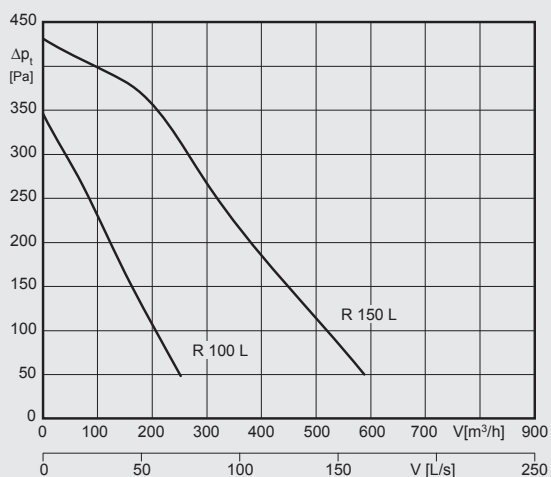


RS-Series

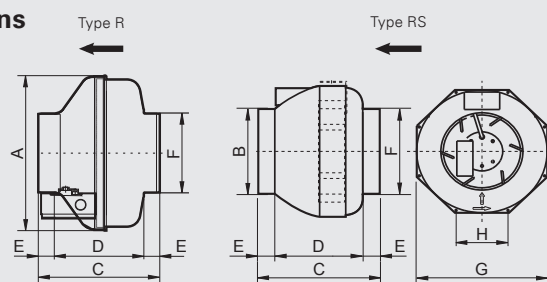


R-Series

Quick selection



Technical data & Dimensions



Tube Fans - Type R (made of steel)

Type	A	B	C	D	E	F	P [W]	I [A]	U [V]	n [min ⁻¹]	L _p [dB(A)]*	W [kg]
R 100 L	Ø 242	-	186	136	25	Ø 100	65	0,3	230	2470	41	2,6
R 150 L	Ø 341	-	190	140	25	Ø 150	110	0,47	230	2520	46	3,4
R 200 L	Ø 341	-	230	180	25	Ø 200	170	0,73	230	2410	47	4,0
R 250 L	Ø 341	-	230	180	30	Ø 250	165	0,7	230	2470	48	5,5
R 315 L	Ø 402	-	255	195	30	Ø 315	300	1,3	230	2400	50	6,0

Tube Fans - Type RS (made of plastic)

Type	A	B	C	D	E	F	G	H	P [W]	I [A]	U [V]	n [min ⁻¹]	L _p [dB(A)]*	W [kg]
RS 100 L	-	Ø 100	220	160	30	Ø 100	245	97,6	65	0,3	230	2480	44	2,4
RS 150	-	Ø 149	230	170	30	Ø 149	340,5	135,7	70	0,3	230	2400	42	3,0
RS 200 L	-	Ø 199	230	170	30	Ø 199	340,5	135,7	160	0,7	230	2540	50	3,7
RS 250 L	-	Ø 249	230	170	30	Ø 249	340,5	135,7	160	0,65	230	2560	48	3,7
RS 315 L	-	Ø 314	275	215	30	Ø 314	405	160,7	300	1,3	230	2390	50	5,6

* measured 1m from casing • all dimensions in mm • subject to modifications and errors